

# **Printer driver Install Guide (64bit)**

December.2017

# Contents

I.	Installation of Printer driver (64bit).....	3
II.	Printer properties .....	8
i.	General .....	8
ii.	Sharing.....	9
iii.	Ports .....	10
iv.	Advanced.....	10
v.	Device Settings.....	11

## I. Installation of Printer driver (64bit)

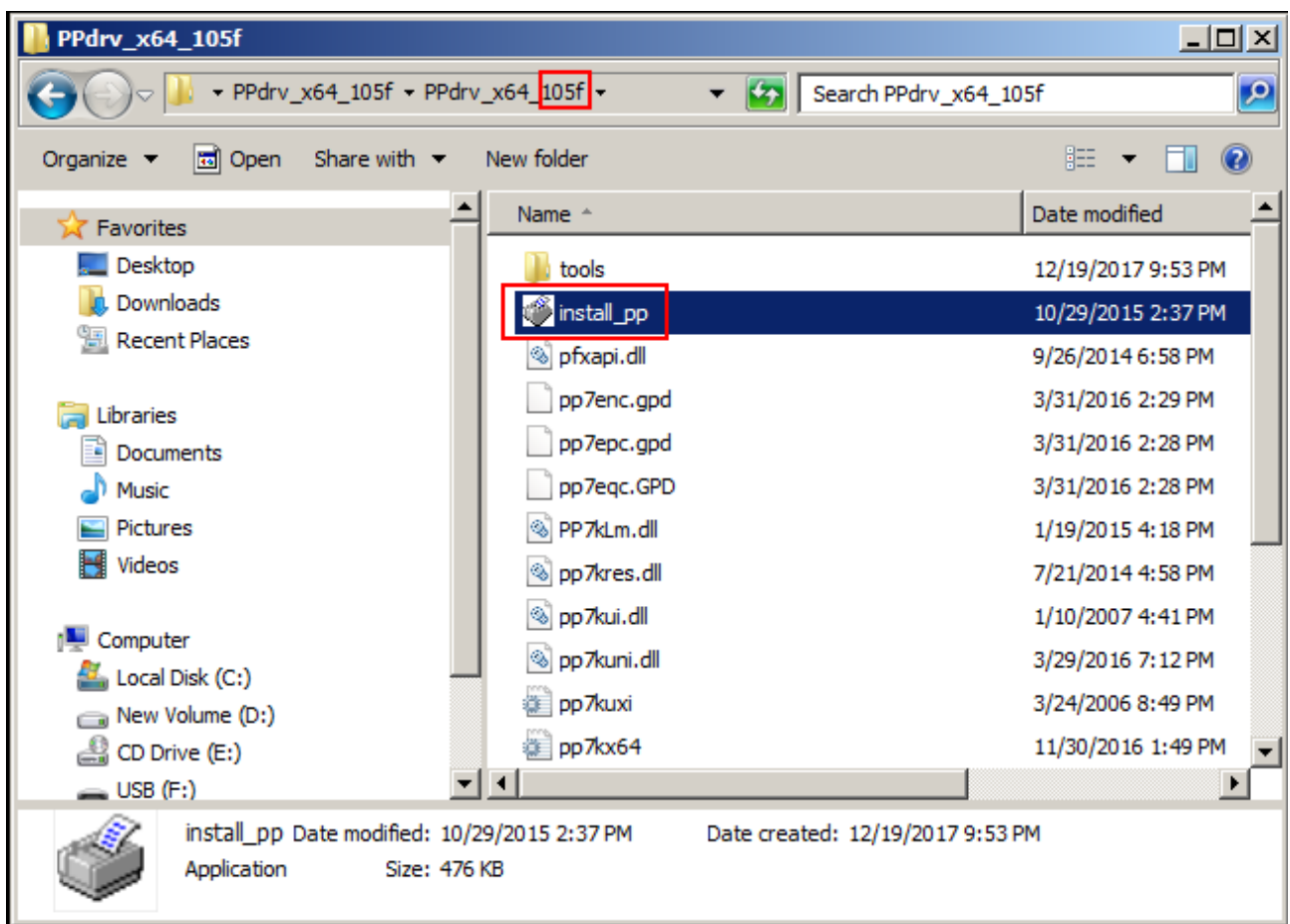
1. Please download the “Printer driver” which for 64bit OS from Posiflex website.

<http://www.posiflex.com.tw/en-global/Download/index/driver?key=Printer%20driver&page=4>

PP-8900 Series thermal Printer Driver for  
WinXP/Win7/Win8/Win10, **64Bit**

v.1.05f

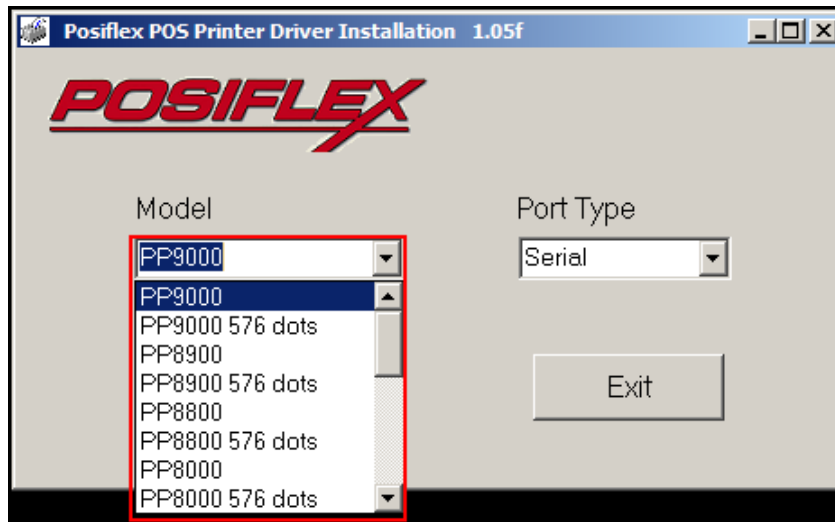
2. Unzip the file “ppdrv\_x64\_xxxx”, and double-click the “install\_pp” icon to install the printer driver on your 64bit OS.



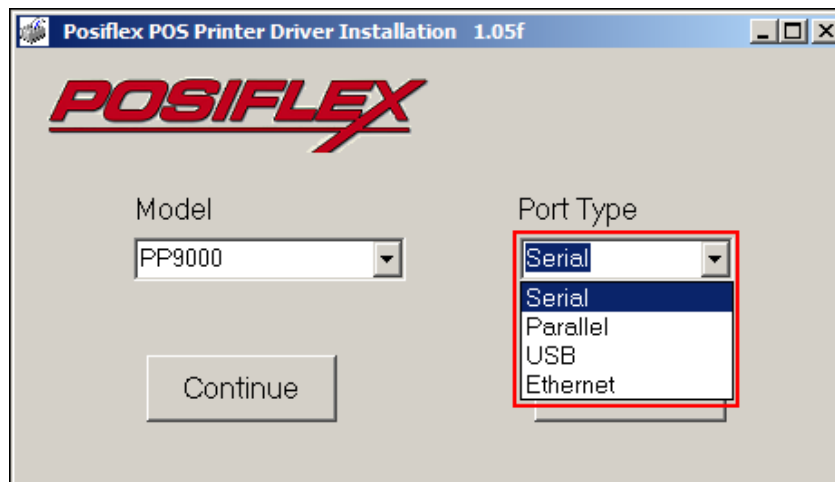
**\*Note:** The xxxx means the version of printer driver, from bellowing picture you can find out it is version 105f.

3. Please accord to the operation environment to select the “Model” and “Port type” for your printer.

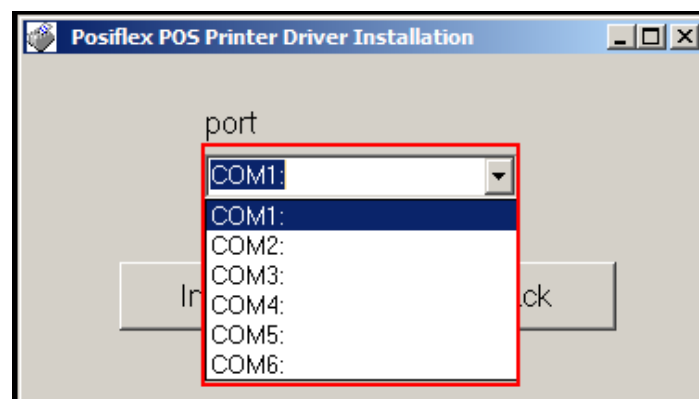
**Model:**



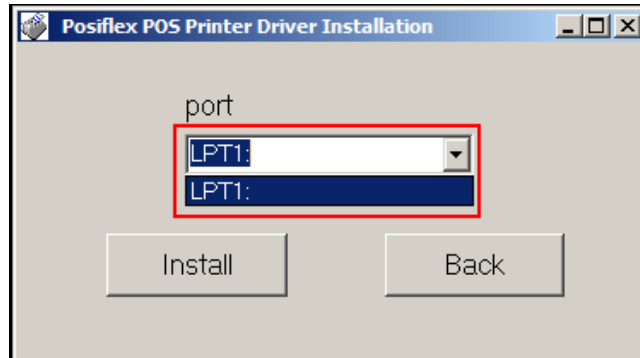
**Port Type:**



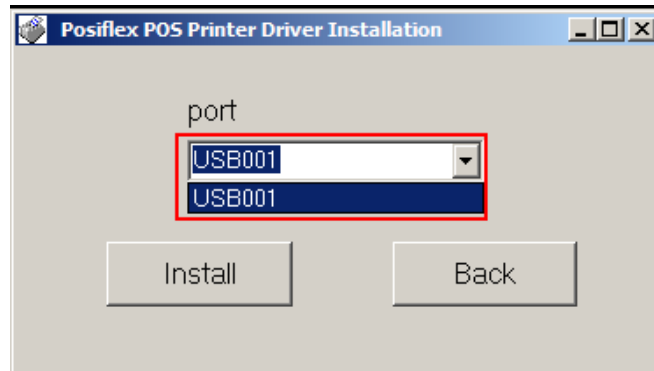
- Serial: RS232, Virtual COM interface



- Parallel: Parallel interface

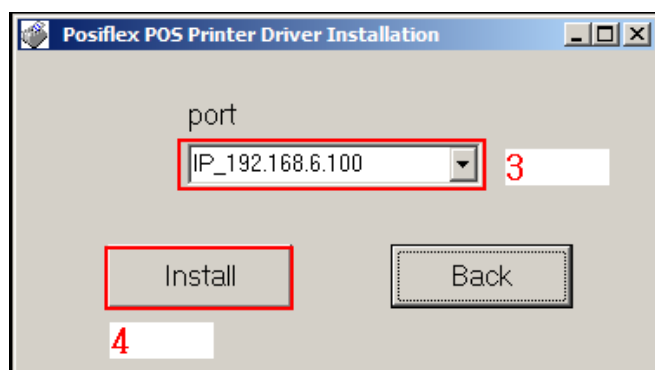
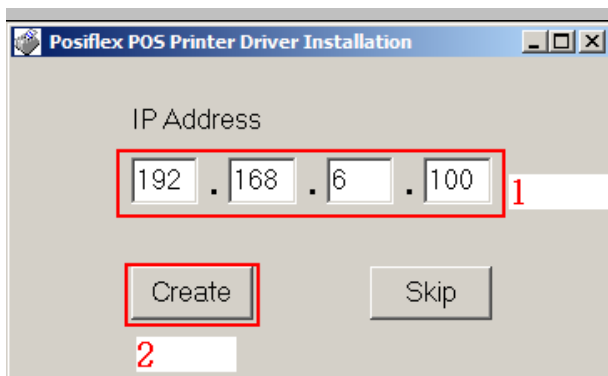


- USB: True USB interface

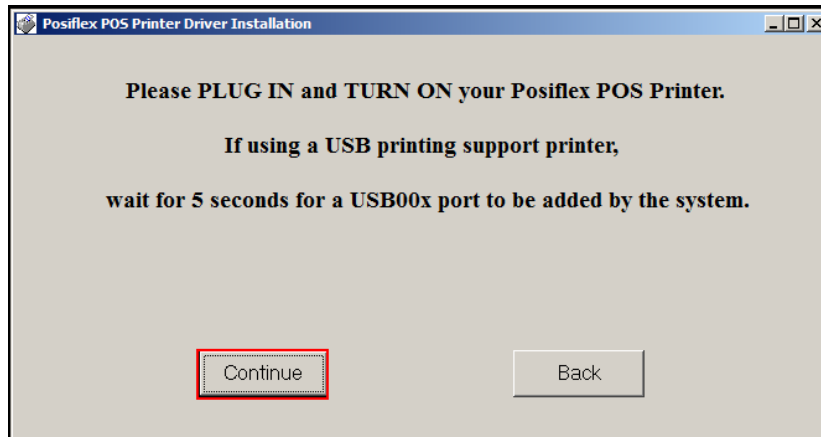


- Ethernet: Wi-Fi, LAN interface

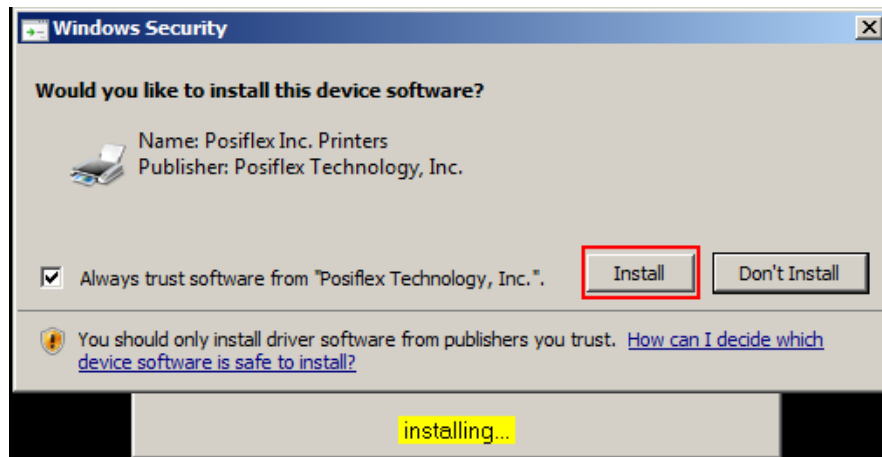
Please enter the printer IP and follow the below order to install the printer driver for your Ethernet printer.



4. Click **Continue** to the next step. (E.g. True USB interface)



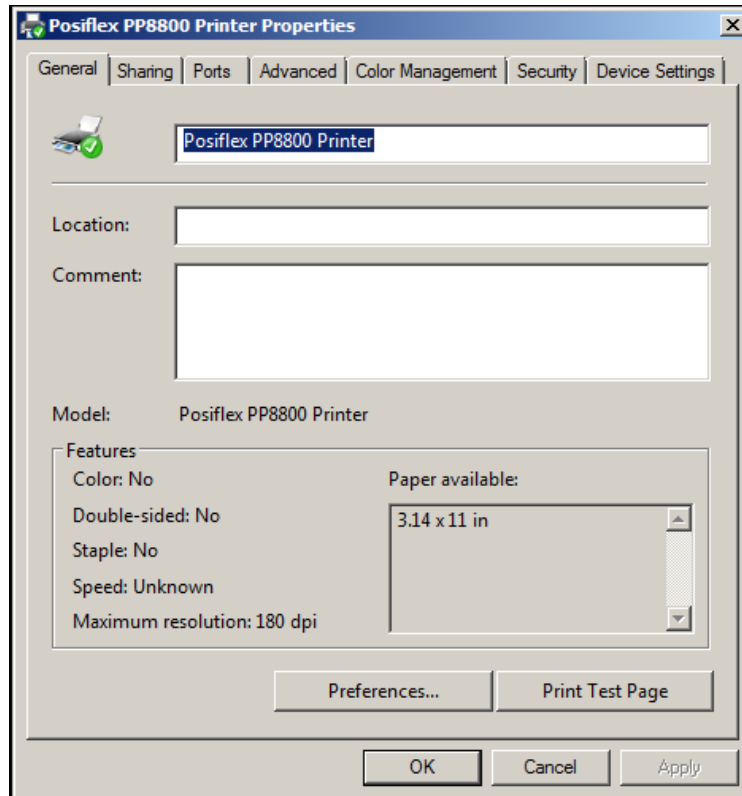
5. Click **Install** to install the printer driver for your printer on 64bit OS.



**\*Note:**

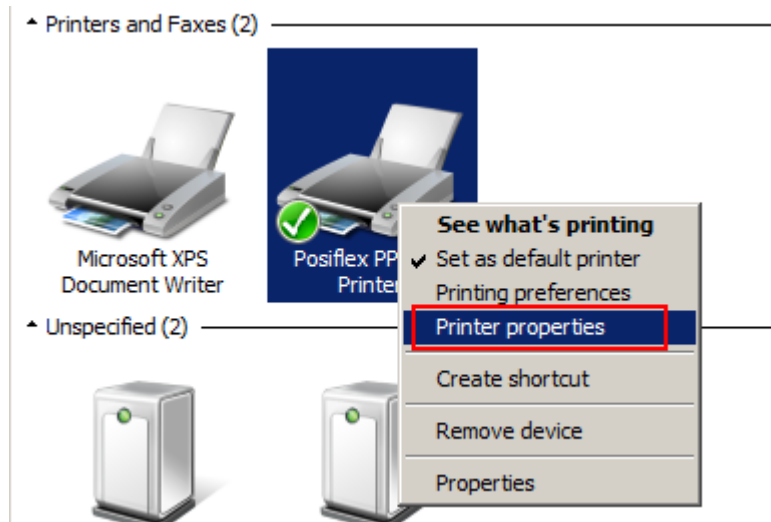
*This screen means our printer driver have signature which can be used safely on Win10 64 bit or other OS.*

6. After finish the installation, the window as below will jump out, then you click <Print Test Page> to test printing.



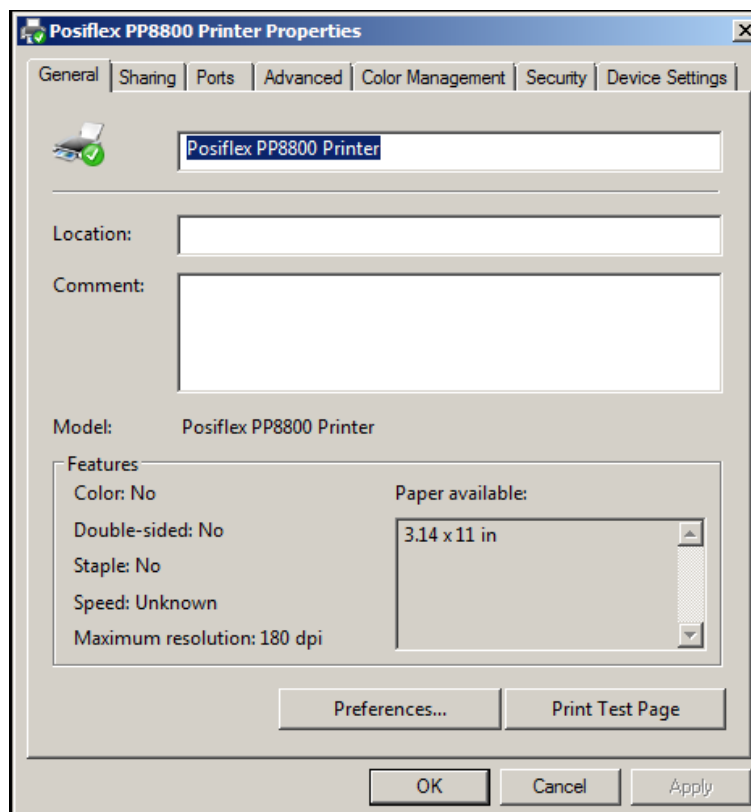
## II. Printer properties

Under <Devices and Printers>, you can right-click on your printer, and select <Printer properties> for more printer settings.



### i. General

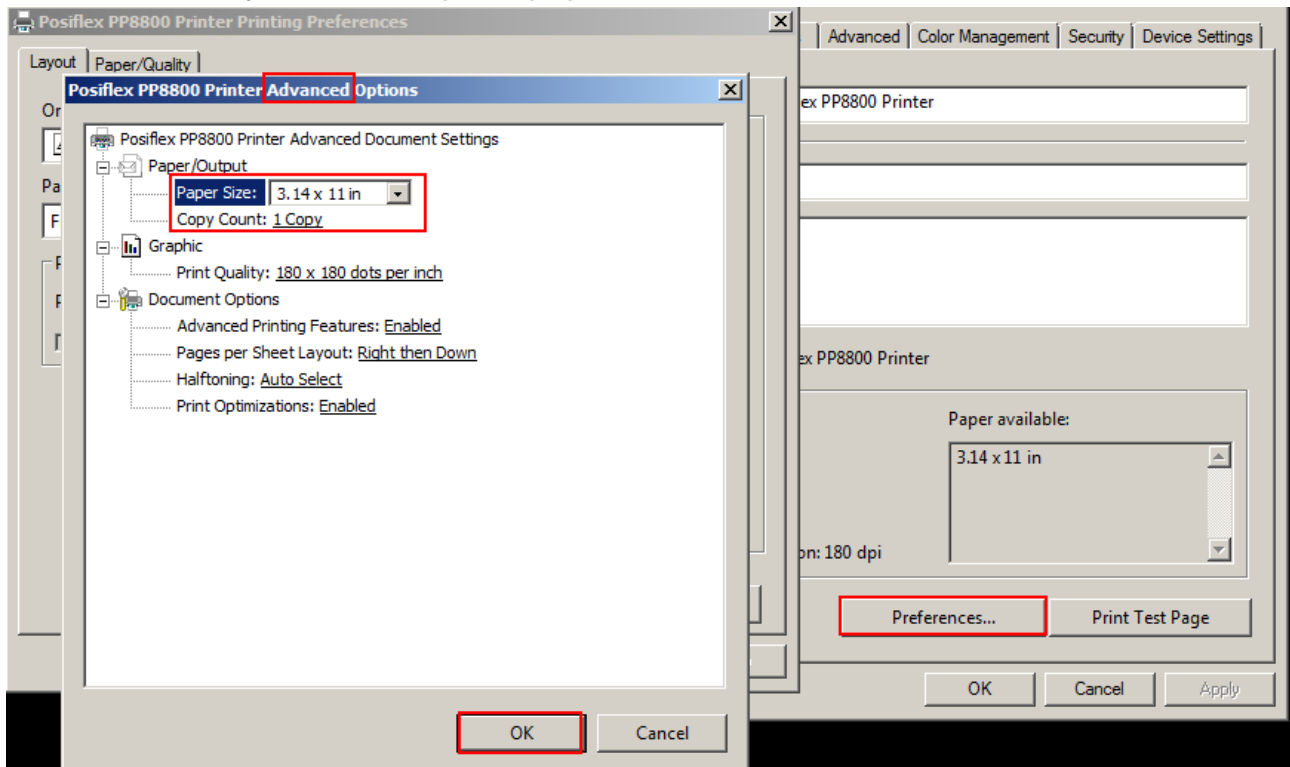
Under this page, you can see the current general setting of your printer, like: printer name, Model, Paper available...And you can also click <Print Test Page> button to test the printing.



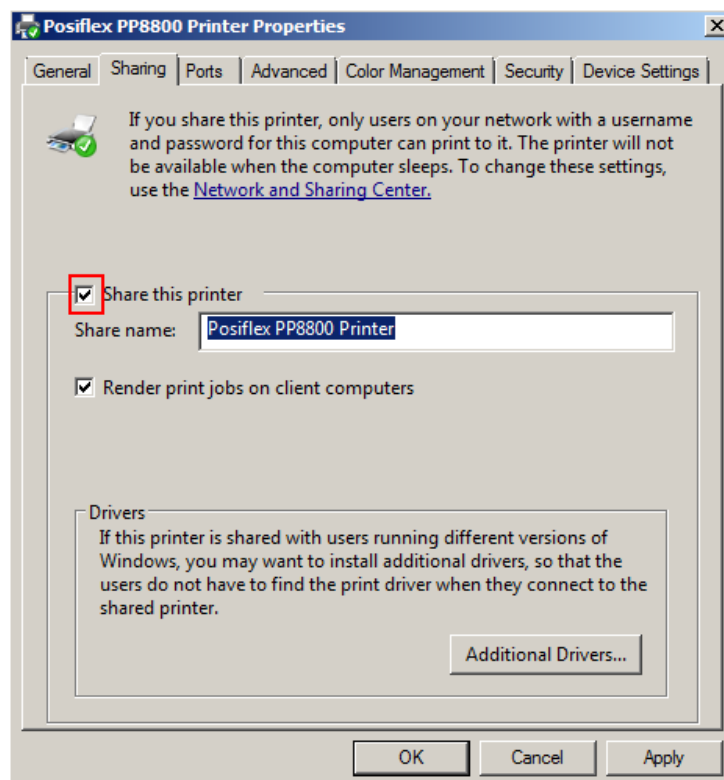


**Preference:**

Set up the printer layout and printer paper/quality for your printer. Click <Advanced...> you can setup the paper size on here.

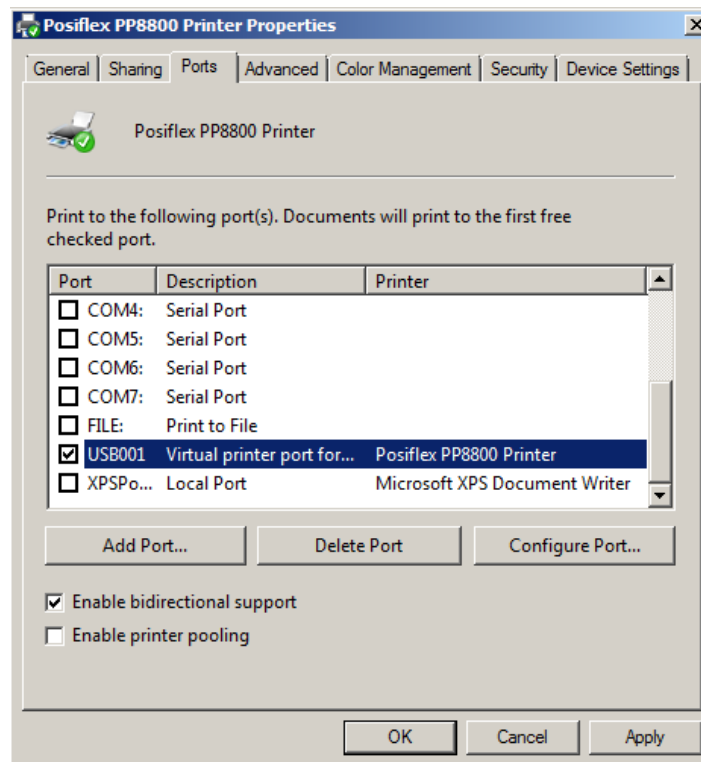
**ii. Sharing**

Under this page, you can share this printer with other users. Please check the <Share this printer> option, when you want to share this printer.



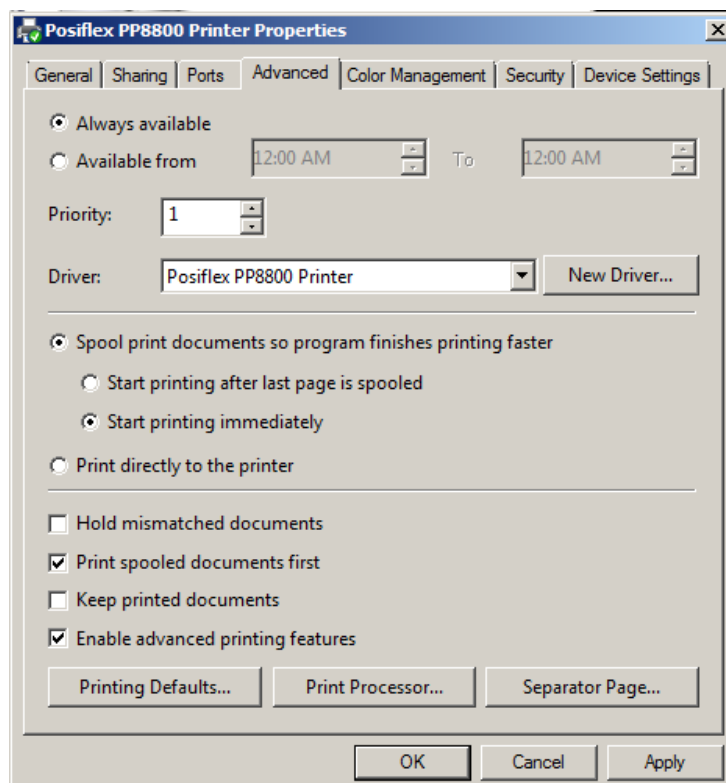
### iii. Ports

Under this page, you can select, add, or delete the printer port for your printer.



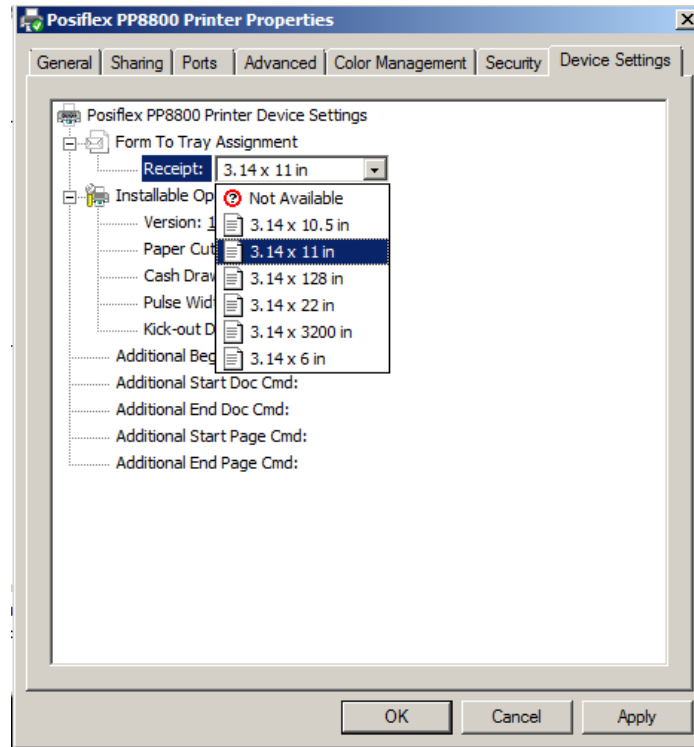
### iv. Advanced

Under this page, you can set up more advanced setting for your printer, like: Available time, Priority...



## v. Device Settings

Under this page, you can select the way of “paper cut”, and “control the cash drawers which follow this printer”, select the “pulse width” for cash drawers (The default of pulse width is 200ms), and “when to kick the cash drawer while printing”..



### **\*Note:**

About the setting of paper size, please refer to the page 9 and set up under the <Preference>.

